



# WATERFALL TOWERS



The image features a large architectural rendering of the Waterfall Towers on the left side. The building is a multi-story structure with a distinctive design of white, wavy balconies that create a cascading effect. Each balcony is lush with green plants and flowers. A prominent feature is a large, artificial waterfall cascading down the side of the building. The sky is blue with scattered white clouds. In the foreground, there's a street with a few cars and a person walking. The overall scene is bright and modern.

WATERFALL  
TOWERS

## Another Episode of Luxury

---

With the convenience of Lahore's central location and peaceful environment, Waterfall Towers is a vertical elegance located exactly opposite to Beaconhouse National University, Raiwind Road Lahore. Being the 17th project of Alif Holdings (Pvt.) Limited, the Waterfall Towers stand G+8 floors high with mesmerizing views around. Contemporary amenities, clean lines, and an extravagant architectural design make the Waterfall Towers a perfect home. The project has been trisected into Central Tower, Eastern Tower, and Western Tower, where more than 200 luxury apartments and presidential suites redefine the modern lifestyle loaded with the most recent facilities.

# Epic Location

Location determines the value of realty



Waterfall Towers, the premier residential complex, is located in the lap of important landmarks.

- Exactly opposite to the famous BNU
- In proximity of Bahria Town Lahore
- Nearest to the Lahore Ring Road
- 15-minute drive from DHA
- 20-minutes drive from LHR Airport
- 5-minute drive from Lake City
- In the lap of other housing societies

# Magical Architecture

Magnificence of the exteriors reflects beauty of the interiors



## Central Tower

Waterfall Towers has been designed to offer an exquisite living experience for its residents. The artificial waterfall flowing from the top of Central Tower presents an eye-catching view. Beautifully architected Waterfall Towers is an ultramodern residential project in Lahore.

## Features



Dedicated balcony for every apartment



Compatible RFID system for entry and exit



Full home automation for a smart, lively lifestyle



Ample space with valet parking service



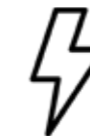
An electricity fenced modern gated community



CCTV surveillance with armed guards



Dedicated and comfortable prayer area



Uncut power backup for common areas



Grocery Delivery Service



On-call availability of maintenance services



Rooftop Club with gym, restaurant and health center



Operational garbage collection system



High speed elevators for residents & guests



Active fire extinguishers and smoke sensors



Uniformed staff with uniforms designed by Ismail Farid



Superbly designed hallways and lobbies



Property management services



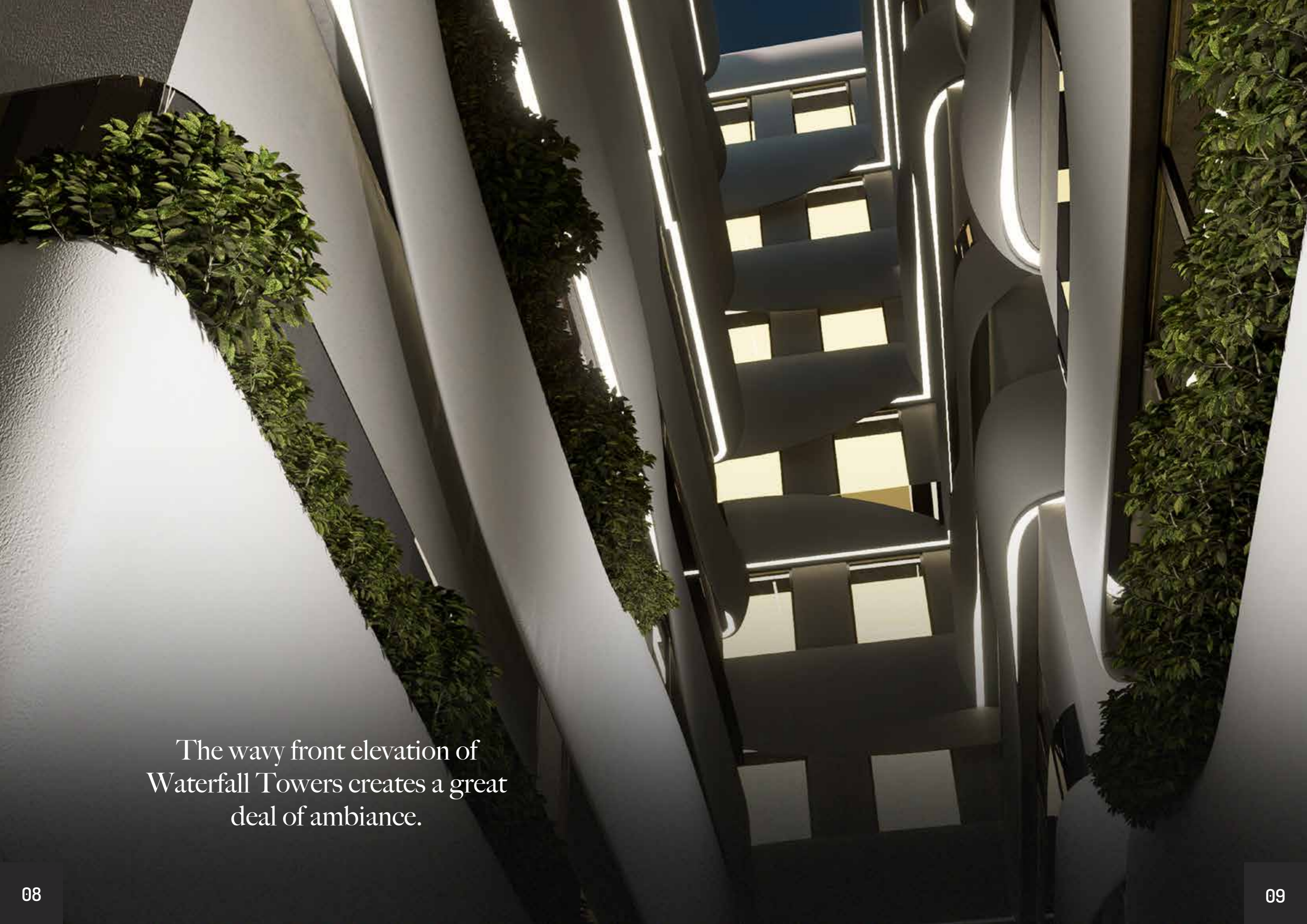
Fully functional laundromat



Ongoing janitorial services



Waiting area for guest



The wavy front elevation of Waterfall Towers creates a great deal of ambiance.

# Basement

CENTRAL TOWER

With supportive entry and exit, the spacious Basement has been clearly demarcated with parking spaces.





Supportive entry and exit.  
The spacious basement has been  
clearly demarcated with parking spaces.

# Rooftop

## CENTRAL TOWER

---

Our Rooftop Club takes the Waterfall Towers to the next level. A thematic restaurant, an equipped gym, and modern jacuzzis fulfill your aesthetic requirements.







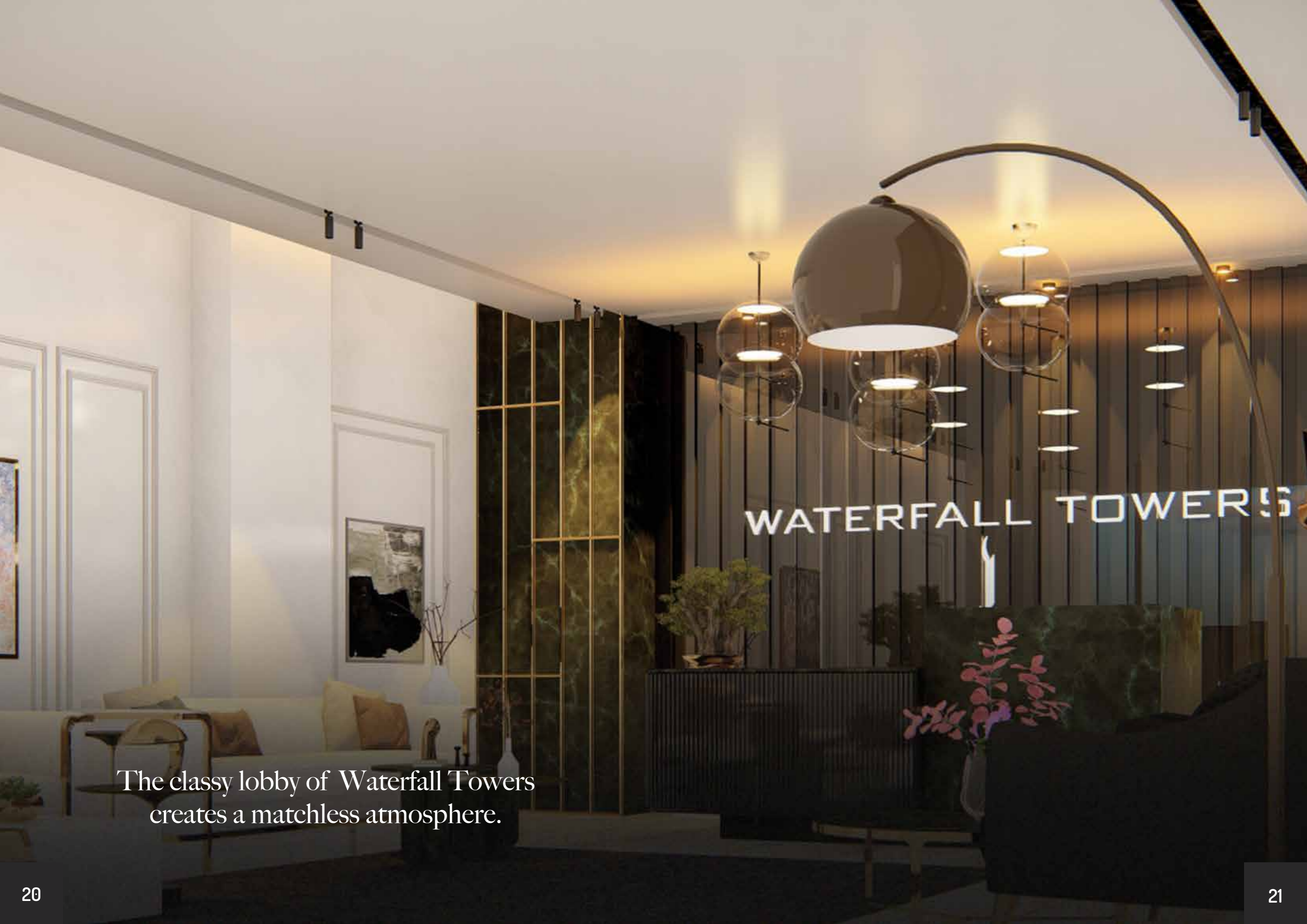
The Rooftop Club makes  
Waterfall Towers a complete residential hub.  
Live, eat, gossip, relax and enjoy!

# Ground

## CENTRAL TOWER

The classy lobby of Waterfall Towers creates a matchless atmosphere. Being an attractive entrance to the residential complex, the lobby is a self-description of luxury, belongingness, peace and style. The pathways from the lobby carry a great deal of wall treatment, lighting and ceiling height. This is how a luxurious lifestyle greets you in Waterfall Towers!





The classy lobby of Waterfall Towers creates a matchless atmosphere.

# Ground Floor Plan

## CENTRAL TOWER



# Apartment - A

Gross Area: 1128 sqft



# Apartment - B

Gross Area: 1159 sqft



# Apartment - C

Gross Area: 1137 sqft



# Apartment - D

Gross Area: 1203 sqft



# 1st to 4th floor

CENTRAL TOWER

These apartments offer perfect homes for sophisticated families who prefer an advanced living away from the worries of life. The fittings and fixtures of the entire interiors have been tailored to the residents' unlimited peace of mind. Book your unit to cherish the frill of Waterfall Towers for an affordable price!



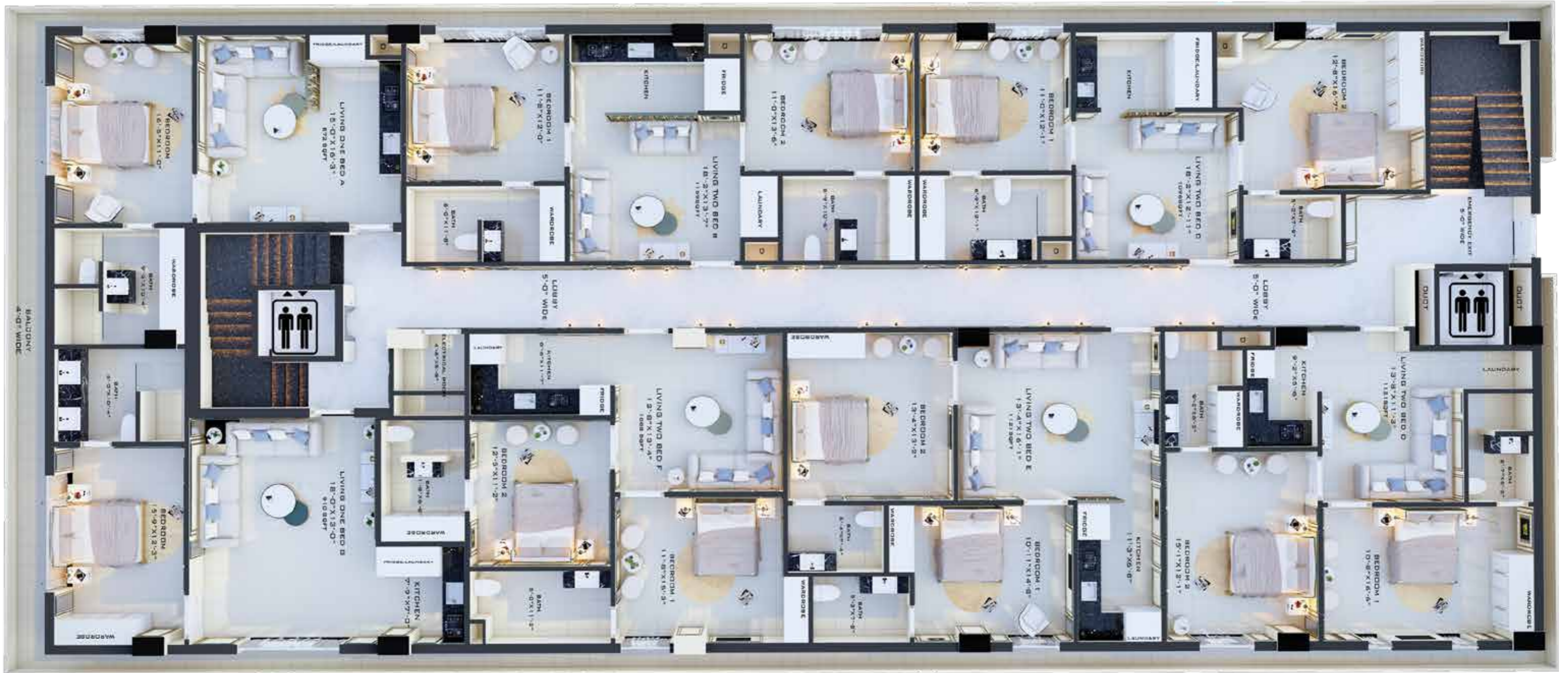


Luxury in apartments is the product of our diligence and creative imagination.



# 1st to 4th Floor Plan

## CENTRAL TOWER



# Apartment - A Presidential Suite

Gross Area: 872 sqft



# Apartment - B

Gross Area: 1159 sqft



# Apartment - C

Gross Area: 1096 sqft



# Apartment - D

Gross Area: 1112 sqft



# Apartment - E

Gross Area: 1112 sqft



# Apartment - F

Gross Area: 1088 sqft



# Apartment - G Presidential Suite

Gross Area: 910 sqft

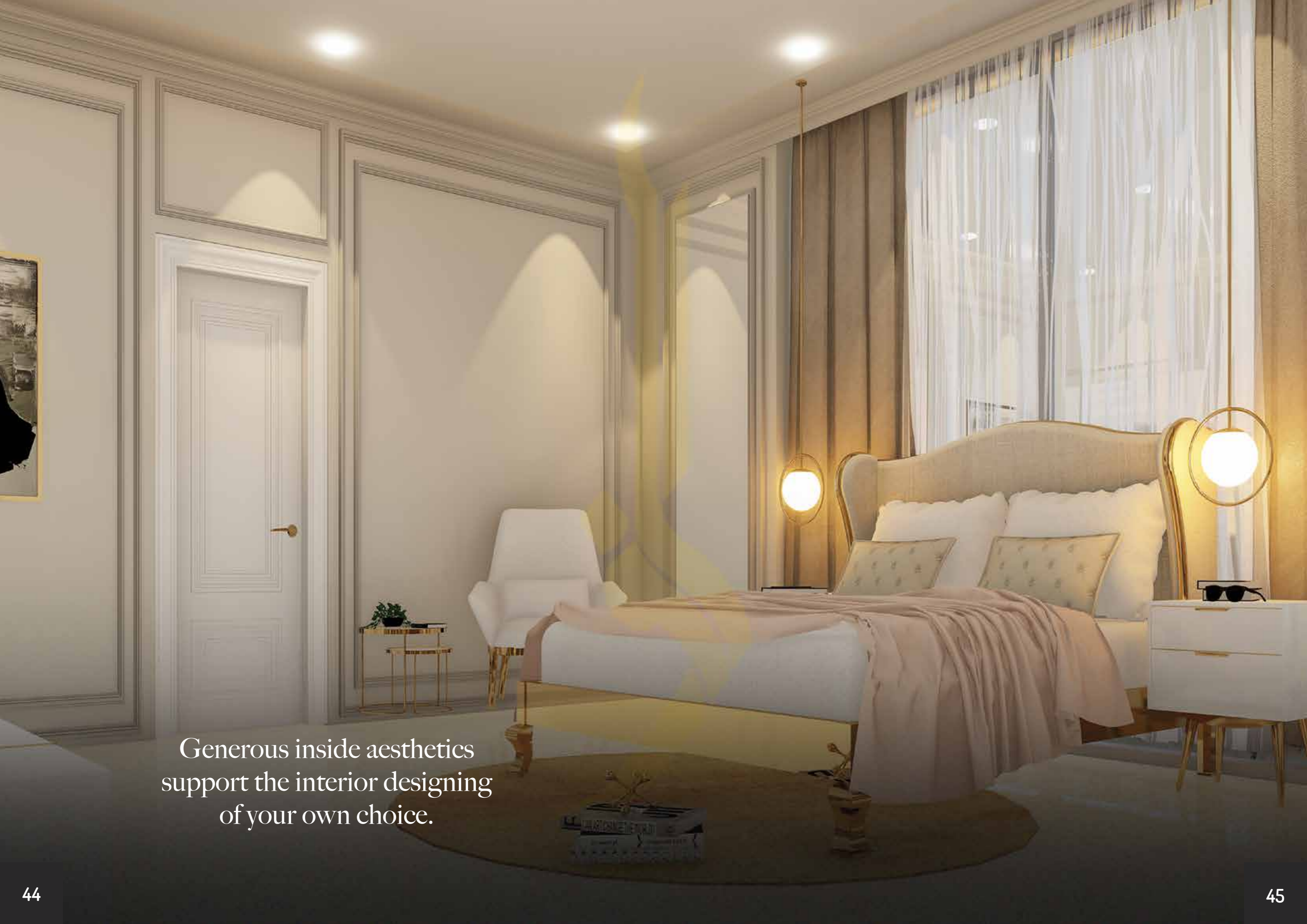


# 5th to 8th floor

## CENTRAL TOWER

Gave with ornamental plants, a separate balcony adds to the views outside. From modular kitchen to the mesmeric bedroom, every part of the apartment leaves a lively impact. Luxury thus remains in consideration round the clock. This is how Waterfall Towers takes you to the new era of opulence!

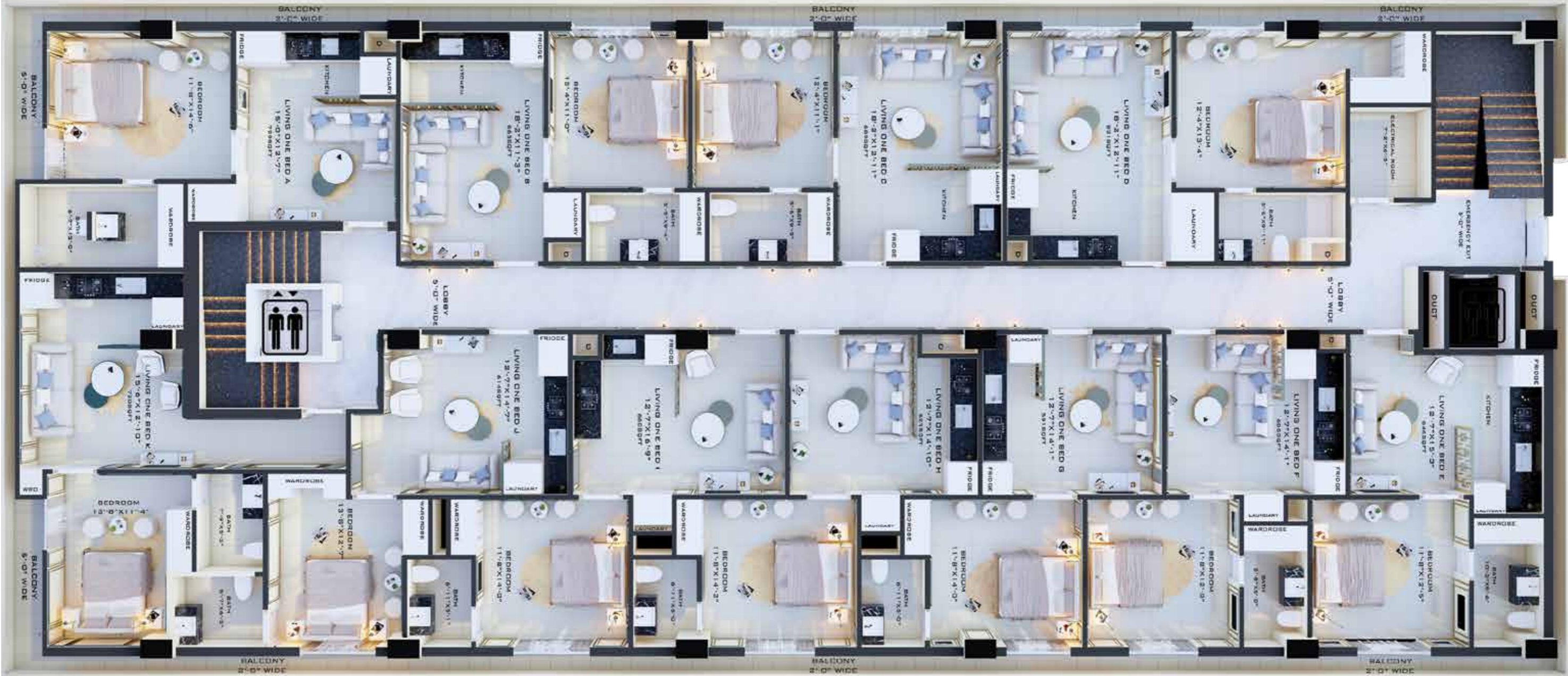




Generous inside aesthetics support the interior designing of your own choice.

# 5th to 8th Floor Plan

## CENTRAL TOWER





# Apartment - A

Gross Area: 729 sqft



# Apartment - B

Gross Area: 663 sqft



# Apartment - C

Gross Area: 689 sqft



# Apartment - D

Gross Area: 831 sqft



# Apartment - E

Gross Area: 646 sqft



# Apartment - F

Gross Area: 605 sqft



# Apartment - G

Gross Area: 591 sqft



# Apartment - H

Gross Area: 623 sqft



# Apartment - I

Gross Area: 660 sqft



# Apartment - J

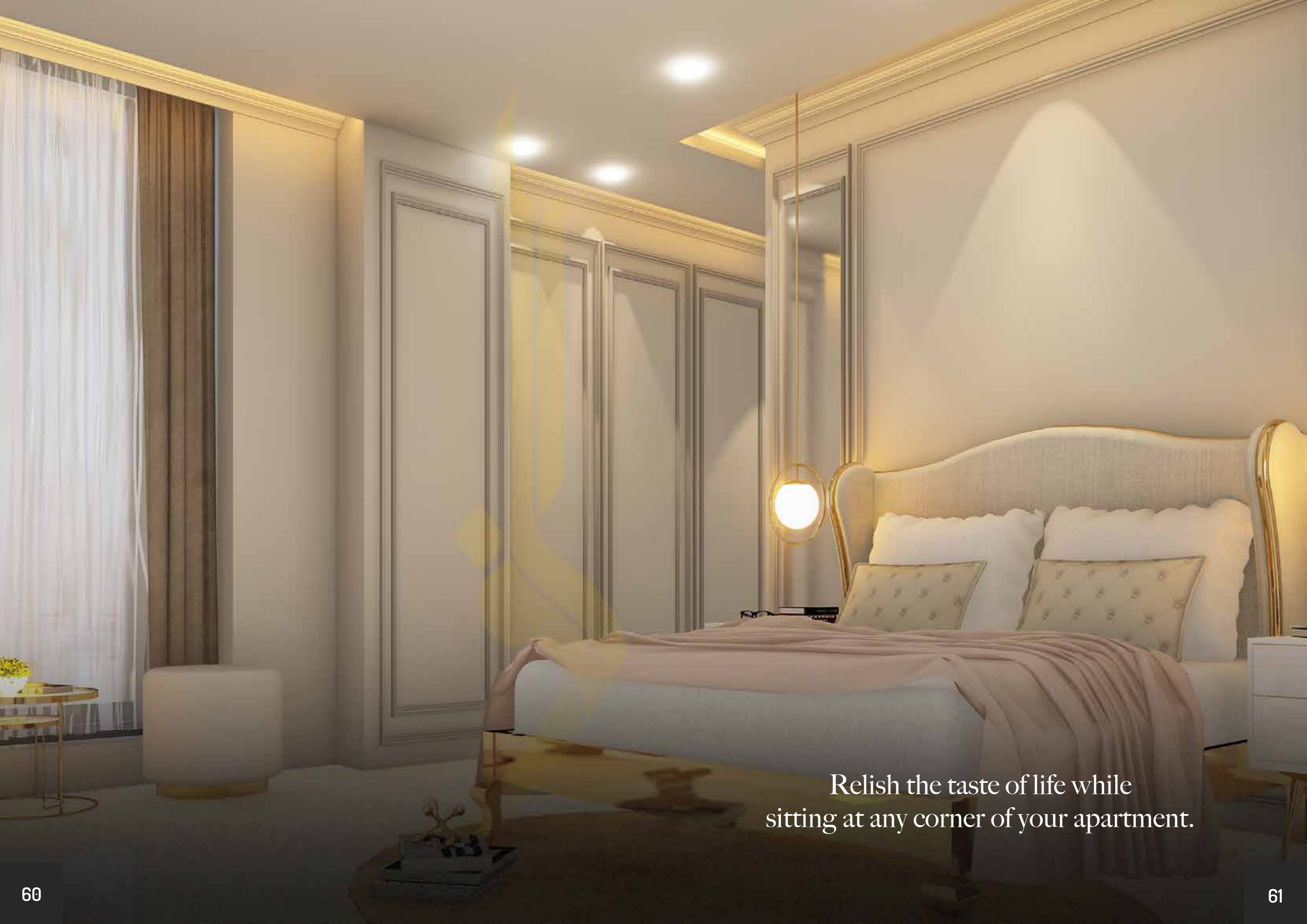
Gross Area: 614 sqft



# Apartment - K

Gross Area: 720 sqft





Relish the taste of life while  
sitting at any corner of your apartment.



Smart facilities in Waterfall Towers  
meet the international standards.





Serenity, security, style —  
what else you need!



WATERFALL  
TOWERS



## ALIF HOLDINGS

Success is the product of experience and credibility

Headquartered in Bahria Town Lahore, Alif Holdings (Pvt.) Limited has been doing wonders in the field of real estate and development since 2010. With a dedicated team of real estate experts, construction aficionados, and associates, we have completed and delivered 12 projects in Lahore and Islamabad within stipulated time period and the work is in process at the remaining ones. From luxurious residential projects to high ROI commercial skyscrapers, Alif Holdings takes care of the hard earned money of its investors.

All projects of Alif Holdings are characterized by comfy living experience for affordable rates. The residential superstructures have been designed to provide maximum comfort to the dwellers, with high-quality fittings and fixtures, ample parking spaces, round-the-clock security, ultimate amenities, and many other features one can dream of. This is how Alif Holdings has become the choice of all.



WATERFALL  
TOWERS